



Advanced Genealogy Records for Library Staff

Tina Beard

tbeaird@plainfieldpubliclibrary.org



The **Internet** is down!



or...

Where can you find
genealogical records
offline??

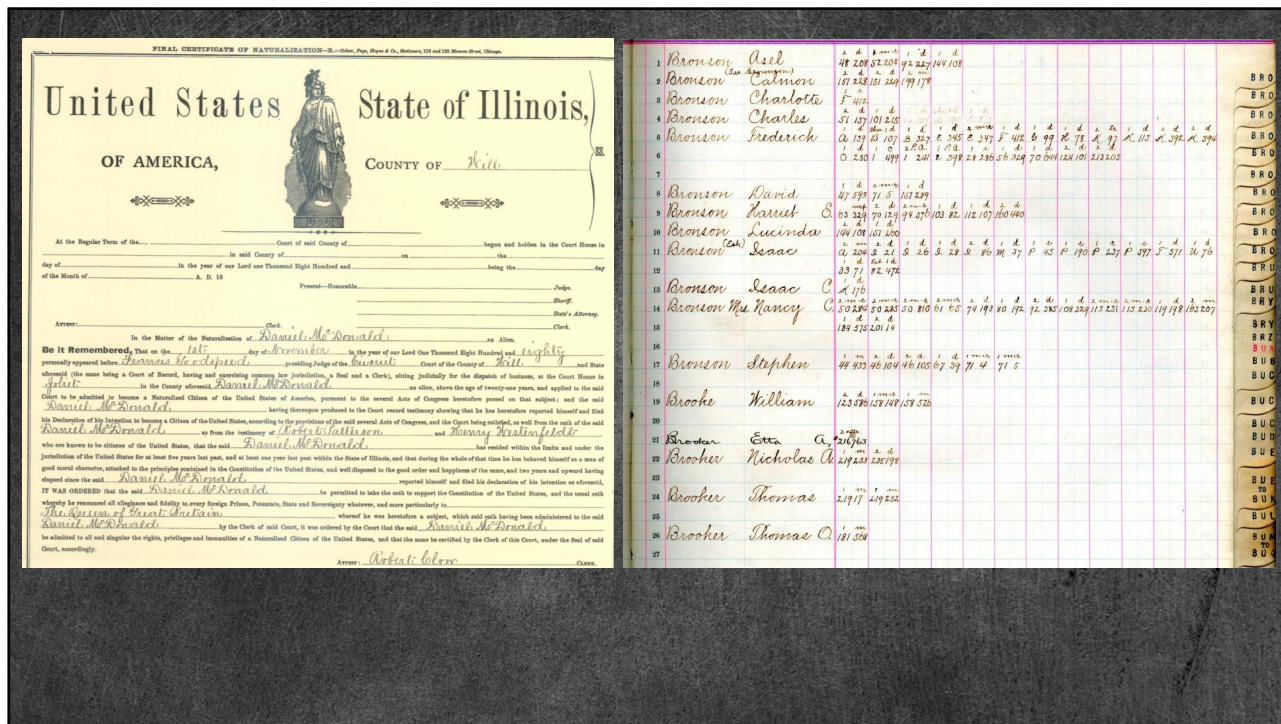
Genealogical Records and Locations

- Adoptions, Land Deeds, Wills and Probates
- Maps, Histories, Newspapers
- Military & Government Records
- Family Records, Diaries, Letters
- Courthouses
- Colleges and Universities
- Archives: State and Federal
- Historical & Genealogical Societies

Types of Records: Courthouse

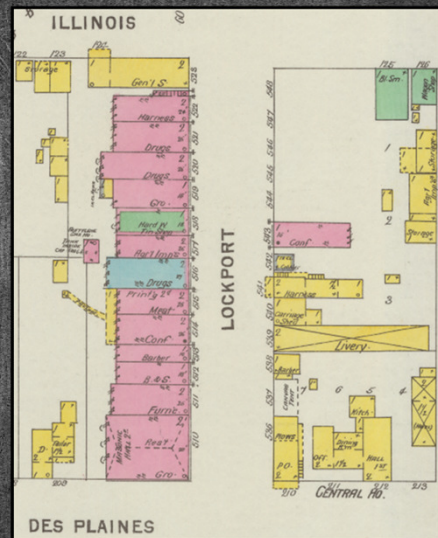
- Adoptions & Guardianships
- Criminal Court
- Family Court/Small-Claims Court
- Incorporations & Tax Records
- Land Deeds & Mortgages
- Maps and Plats
- Naturalizations
- Probates and Wills





Types of Records: Colleges & Universities

- Many universities will lend genealogy books through Inter Library Loan
 - County/Regional/City Histories
 - Directories & Gazetteers
- Special Collections:
 - Business Records & Directories
 - Government Documents
 - Map Collections
 - Yearbooks and Student Directories
- <https://collections.carli.illinois.edu>



The screenshot shows the CARLI website interface. At the top, the CARLI logo and name are displayed, along with the text "Material in this collection has been provided by The Consortium of Academic and Research Libraries in Illinois." Below this, there are navigation tabs for "About" and "Collection". A search bar is present, and the results are sorted by "RELEVANCE". The main content area features a grid of collection cards, each with a logo and the number of items. The "UIC" card is highlighted in blue and circled in orange. To the right, a "TOPIC" list is visible, with "Religion and science" circled in orange. The total number of results is 10,944.

Special Collections at Illinois Universities

Augustana College: Swedish Immigration Research Center

Illinois State University: Circus & Allied Arts Archives

University of Chicago: 1893 World's Columbian Exposition

www.monmouth.edu/university/the-bruce-springsteen-special-collection.aspx

<https://library.ucsc.edu/grateful-dead-archive>

Types of Records: Archives and Museums

- Many museums have archives/special collections
 - Ephemera: Textiles, Furniture, Toys
 - Family Histories, Scrapbooks, Diaries
 - Photo Collections
- Archive Grid is “WorldCat” for archives:
<https://beta.worldcat.org/archivegrid/>
- Many small IL museums are members of the Illinois Association of Museums:
www.illinoismuseums.org



Illinois State Archives System

- Illinois State Archives
 - State Government Records
 - Land Records (School Lands Records)
 - Military Service (Adjutant General)
 - Penitentiary Records
 - Vital Records (marriages and deaths)
- www.cyberdriveillinois.com/departments/archives



The Illinois State Archives provides genealogical help through a series of pamphlets and databases

You can search for items Within the archives in Their online card catalog <http://archon.ilsos.net>

They are available to help 8:00-4:00 Monday-Friday

elgin mental health Search

Location: Archon → Elgin Mental Health Center → Elgin Mental Health Center:...

Browse: **Record Series** Subjects Agencies Record Groups

Elgin Mental Health Center: Medical Casebook, March 16, 1897-February 9, 1898 | Illinois State Archives

Title: Elgin Mental Health Center: Medical Casebook, March 16, 1897-February 9, 1898

ID: 256/001

Extent: 1.0 Volumes

Arrangement

Subjects (links to similar collections)

Administrative Information

Scope and Contents: Casebook entries include patient's name, age, sex, marital status, number of children, town and county of residence, birthplace, occupation, religion, and education; case/admission number; ~~time of admission~~ admission date; whether supported privately or by county; number of previous admissions; number of attacks; duration and assessed cause of insanity; form of insanity; name and address of correspondent (occasional); information on family background and use of tobacco, alcohol, and narcotics; names of any insane relatives; and date and cause of discharge. Each medical history also has a superintendent's report which outlines patient's general physical condition, including patient's height, weight, and eye and hair colors.

Printer-friendly

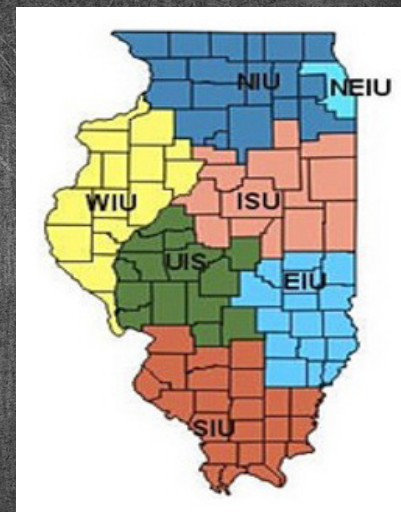
Illinois State Archives

Page Generated in: 0.204 seconds (using 170 queries).
Using 61946208 of memory. (Peak of 62364608.)

Powered by Archon Version 3.12
Copyright ©2010 The University of Illinois at Urbana-Champaign

Illinois State Archives System

- Illinois State Regional Archives Depositories (IRAD)
 - Seven repositories at universities across Illinois
 - Collect county government records
 - Copies of records available for .50
 - Will search for 2 names per request



www.cyberdriveillinois.com/departments/archives/IRAD/iradreg.html

[IRAD Home](#) • [Administrative Histories / Record Description](#) • [Local Government Records Database](#) • [Quick Links](#) • [Regional Map and Contact Information](#) • [Research Policy](#)

Regional Map and Contact Information

Regional depositories are staffed by graduate student interns, hours may vary slightly from the posted schedules. Please call before planning a visit to a depository. Click on a county to see facts about that county.

Eastern Illinois University (EIU)

Illinois Regional Archives Depository
 Booth Library
 Eastern Illinois University
 600 Lincoln Avenue
 Charleston, IL 61920
 217-581-6093
 Hours: Mon.-Fri., 9 a.m.-12 p.m.; 1-4 p.m. (except state holidays)
 Counties: [Clark](#), [Clay](#), [Coles](#), [Crawford](#), [Cumberland](#), [Douglas](#), [Edgar](#), [Edwards](#), [Effingham](#), [Jasper](#), [Lawrence](#), [Moultrie](#), [Richland](#), [Shelby](#), [Wabash](#), [Wayne](#)
[Depository Information and University Map](#)

Illinois State University (ISU)

Illinois Regional Archives Depository
 Illinois State University
 2016 Warehouse Road
 Campus Box 1520
 Normal, IL 61790-1520
 309-452-6027
 Hours: Mon.-Fri., 9 a.m.-12 p.m.; 1-4 p.m. (except state holidays)
 Counties: [Champaign](#), [DeWitt](#), [Ford](#), [Grundy](#), [Iroquois](#), [Kankakee](#), [Livingston](#), [Logan](#), [Marshall](#), [McLean](#), [Piatt](#), [Tazewell](#), [Vermilion](#), [Woodford](#)
[Depository Information and University Map](#)

Northeastern Illinois University (NEIU)

Illinois Regional Archives Depository
 Ronald Williams Library
 Northeastern Illinois University
 5500 N. St. Louis Avenue
 Chicago, IL 60625-4699
 773-442-4500

Illinois State University
Houses the IRAD for
Central Illinois Counties

[Services](#) [Publications/Forms](#) [Departments](#) [News](#) [Contact](#) **CYBERDRIVEILLINOIS.COM**

OFFICE OF THE ILLINOIS SECRETARY OF STATE

JESSE WHITE
 SECRETARY OF STATE
 & STATE ARCHIVIST

SEAL OF THE STATE OF ILLINOIS

Search Cyberdriveillinois.com

Home > [www.cyberdriveillinois.com](#) > [Departments](#) > [Archives](#) > [IRAD](#) > [Hancock County](#)

Illinois Regional Archives Depository (IRAD) System [Illinois State Archives](#)

[IRAD Home](#) • [Administrative Histories / Record Descriptions](#) • [Local Government Records Database](#) • [Quick Links](#) • [Regional Map and Contact Information](#) • [Research Policy](#)

Hancock County

Location and contact info is provided for each of the IRAD offices. Staff will research up to 2 family names at a time. Copies are .50 each with the first 2 pages copied for free.

Contact Information
 Hancock County Courthouse
 500 Main St.
 Carthage, IL 62321
 217-357-3911 – County Clerk
 217-357-2616 – Circuit Clerk
 217-357-3911 – Recorder

IRAD Depository
 University Library
 Western Illinois University
 1 University Circle
 Macomb, IL 61455-1390
 309-288-2716

Fact sheets are provided for each county and include important dates and township information

Township Map

LEGEND

- Civil Township Boundary
- - - Congressional Township Boundary

Pertinent Databases

- [Federal Township Plats of Illinois](#)
- [Illinois Public Domain Land Tract Sales Database](#)
- [Illinois Statewide Death Index, 1916-1950](#)
- [Illinois Statewide Marriage Index](#)
- [Local Governmental Records Database](#)
- [Name Index to Illinois Local Governments](#)

Established

- January 13, 1825 (*Laws*, 1825, p. 93)
- County organization was completed on January 15, 1829.

Origin of the name of the county

- Named for John Hancock, a prominent figure of the American Revolutionary period, a Major General of the militia, President of the Continental Congress, first signer of the Declaration of Independence, and first Governor of the State of Massachusetts.

Present area, or parts of it, formerly included in

- 1825-1829 - Attached to Adams (*Laws*, 1825, p. 95)
- 1821-1825 - Pike
- 1812-1821 - Madison
- 1795-1812 - St. Clair

County Seats

- 1833-present - Carthage

History of county governing board

- 1829-1850 - County Commissioners' Court
- 1850-present - County Board of Supervisors

Township Government

- Adopted - November 6, 1849

Township Names

- Appanoose
- Augusta
- Bear Creek
- Carthage
- Chili
- Dallas City - Formed from Pontoosuc in 1860.
- Durham
- Fountain Green
- Hancock - Formed from Fountain Green and St. Marys on April 27, 1855.

JESSE WHITE
SECRETARY OF STATE

Home • Departments • Archives • Databases • Local Governmental Records Holdings

ILLINOIS STATE ARCHIVES

Local Governmental Records Holdings

Enter text in any field to restrict the search to only those records which CONTAIN your text in that field. Searches are not case sensitive. You may use any common wildcards in the lower case.

You may search by the name of the county, the title of the record series or depository designation or any combination of these fields. Click the "Submit Query" button after you have typed your search term or terms. To see all of the records in the database at once, click "Reset" then "Submit Query." Be advised that it may take several minutes to download the entire database.

Listed below are suggestions for searching the IRAD local governmental records database.

- To get a listing of all record series in IRAD with probate in the title, enter the word PROBATE. For naturalization records, enter the word NATURALIZATION.
- To find all records for a particular city, town or village, enter the name of the municipality enclosed in parentheses. For example, type (VIRDEN) to get a listing of all records in IRAD for the City of Virden.
- To find all records for a particular township, enter the name of the township followed by the abbreviation TWP. For example, type VIRDEN TWP to get a listing of all records in IRAD for Virden Township.

County: ←

Title:

Depository:

Home | Terms of Use | Privacy Policy | Land of Lincoln Screensaver | National Center for Missing & Exploited Children | Amber Alert

ABOUT US | SERVICES | PUBLICATIONS | NEWS | DEPARTMENTS | CONTACT US | **SEARCH**

OFFICE OF THE ILLINOIS SECRETARY OF STATE

JESSE WHITE
SECRETARY OF STATE

Home • Departments • Archives • Databases • Local Governmental Records Holdings

ILLINOIS STATE ARCHIVES

Local Governmental Records Holdings

Search Criteria: County: HANCOCK

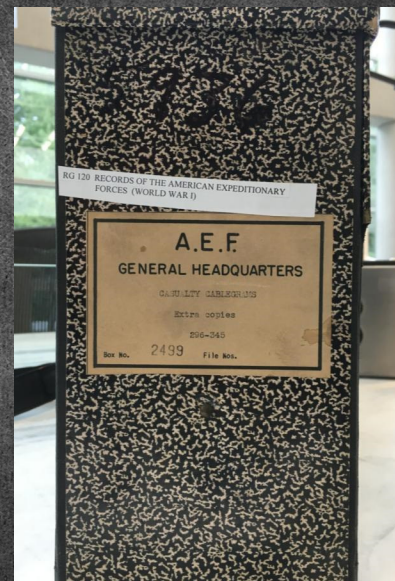
County	Title	Begin Date	End Date	IRAD Dep	Accession No.
HANCOCK	ADOPTION RECORD	1883	1904	WIU	2/0061/57
HANCOCK	ASSESSOR'S BOOKS	1848	1872	WIU	2/0061/19
HANCOCK	ASSESSOR'S BOOKS (DALLAS CITY)	1871	1872	WIU	2/0074/01
HANCOCK	ASSESSOR'S BOOKS (ST. MARY'S TWP)	1852	1853	WIU	2/0225/01
HANCOCK	BIRTH CERTIFICATES	1844	1922	WIU	2/0061/01
HANCOCK	BIRTH CERTIFICATES (AUGUSTA TWP)	1920	1923	WIU	2/0134/03
HANCOCK	BIRTH CERTIFICATES (HANCOCK TWP)	1920	1925	WIU	2/0102/40
HANCOCK	BIRTH RECORD	1877	1915	WIU	2/0061/03
HANCOCK	BIRTH RECORD INDEX	1867	1947	WIU	2/0061/02
HANCOCK	BIRTH RECORD, DELAYED	1844	1877	WIU	2/0061/59
HANCOCK	BOARD OF SUPERVISORS MINUTES	1829	1847	WIU	2/0061/27
HANCOCK	BURIAL AND REMOVAL PERMITS	1902	1941	WIU	2/0102/39
HANCOCK	BURIAL AND REMOVAL PERMITS (AUGUSTA TWP)	1920	1977	WIU	2/0134/05
HANCOCK	CEMETERY RECORDS	1924	1977	WIU	2/0061/54

Records dates and accession numbers are provided for viewing in-house. Items do not circulate.

Not all counties have the same collections, nor years available.

U.S. National Archives: www.archives.gov

- Archives I: Washington, D.C.
 - Immigration & Naturalization Records
 - Land Records
 - Military Records (Rev War to 1914)
 - Personnel, Unit & Base Records
- Archives II: College Park, Maryland
 - Maps, Prints and Photographs
 - Military Unit & Base Records Only (WWI-Vietnam)



U.S. National Archives: NPRC

- National Personnel Records Center, St. Louis
 - Government Employee Records
 - Civilian Conservation Corps (CCC) Records
- Military Service Records 1914-Present
 - Records pre 1/1/1954 are open to the public
 - Records after 1/1/1954 are sealed and only available to next-of-kin
 - Next of Kin includes: un-remarried widow, children, siblings or parents

U.S. National Archives: Regional Branches

- Sixteen regional archives across the U.S.
- Fifteen Presidential Libraries
- Fifteen additional affiliated archives
- Each Archives branch collects records for their surrounding states
- The “Great-Lakes” branch of the National Archives is in Chicago and collects records for Illinois, Indiana, Michigan, Minnesota, Ohio & Wisconsin

U.S. National Archives: Great Lakes

- Naturalization Records for District (Federal) Courts
- Federal lawsuits and prosecutions
 - FBI Case Files
 - Copyright and Trademark Violations
- Maritime Records for 4/5 Great Lakes
- Bureau of Indian Affairs Records

THE NATIONAL ARCHIVES AT CHICAGO

The National Archives at Chicago
September 2016

A Coastwise Exercise in Religious Persecution, or Expelling the Mormons from Beaver Island

Record Group 36, Records of the U.S. Customs Service, contain a variety of records documenting commerce on the Great Lakes. The service has been responsible for the enforcement of numerous laws and regulations pertaining to the import and export of merchandise, collection of tonnage taxes, control of the entrances and clearances of vessels and aircraft, regulation of vessels involved in coastwise and fishing trades, and the protection of passengers.

Each collection district was run by a collector of customs, who was responsible for the enforcement of all rules and regulations. A surveyor, under the collector's supervision, kept a daily record of all vessel arrival and clearances and was assisted by inspectors, weighers, and gaugers in the collection and payment of duties. The notes kept by one such surveyor from the Milwaukee Collection District for the series "Record of Entrances and Clearances, 1854-1899" contain a small footnote of the final days of the Straigle branch of the Mormon religion in Beaver Island Michigan.

Before settling in Utah, the Mormon religion attempted to establish itself in the Midwest. The Mormons soon found themselves in conflict with the surrounding communities in the State of Illinois, often including armed conflict. The assassination of Joseph Smith and Hyrum Smith, the religion's founder and his eldest son, led to a crisis for the new religion as it also faced ongoing conflicts with the non-Mormons in the area. Most of the Mormons followed Brigham Young west and eventually settled in Salt Lake City, Utah. However, some believed that James Jesse Strang was the true successor to Smith and his splinter group moved north from the ransacked town of Nauvoo Illinois.

1856 daguerrotype of James Jesse Strang (Source: Wikimedia Commons)

In This Issue:

Page 1: A Coastwise Exercise in Religious Persecution, or Expelling the Mormons from Beaver Island

Page 2: New Archivist joins staff in Chicago

Page 3: Legislative Librarian visit the National Archives at Chicago

Page 4: All research rooms at NARA will be closed on Thursday, Sept. 15, 2016

Page 5: Staff celebrates Labor Day

Page 6: Chicago Open Archives and the National Archives at Chicago

The National Archives at Chicago is located at:
2308 S. Pulaski Road
Chicago, IL 60629-5000
773-448-5000
lib@nara.gov

The National Archives at Chicago research rooms are open to the public Monday through Friday from 8:08 AM to 4:15 PM.

The National Archives at Chicago is closed on Monday September 8 in recognition of Labor Day.

NATIONAL ARCHIVES

Page 1

Types of Records: Historical & Genealogical Societies

- Business Ledgers and Receipts
- Directories: i.e. City, Church, School
- Family Diaries, Papers and Records
- Group Records, Programs and Photos
- Military Service Papers and Uniforms
- Newspaper Clippings Files (Obituaries)
- Photos and Scrapbooks

Facebook and Flickr are a great way to find Historical and Genealogical societies



Facebook & Flickr Genealogy/History Pages

- www.facebook.com/willgrundygeneologicalsociety/?fref=ts
- www.facebook.com/Little-White-School-Museum-105387246173100
- www.facebook.com/ChicagoGenealogicalSociety
- www.flickr.com/photos/usnationalarchives
- www.flickr.com/photos/library_of_congress/sets
- www.flickr.com/groups/genealogy

Try-It Illinois
www.finditillinois.org/tryit

Login: ilfreetry

Password: Illinet16

Available until
 November 30th

Genealogy & Family History

[Academic Video Online Premium](#) ([Alexander Street Press Connect](#))
[ACCESS Video On Demand](#) (Streaming video for Public Libraries) ([Facts on File Connect](#))
[American Antiquarian Society \(AAS\) Historical Periodicals Collection: Series 1](#) ([EBSCO Connect](#))
[American History: 1493-1945](#) ([Adam Matthew Digital Connect](#))
[Britannica Image Quest](#) ([Britannica Digital Learning Connect](#))
[Chelsea House Biographies Online](#) ([Facts on File Connect](#))
[Classroom Video On Demand](#) (Streaming Video for High Schools) ([Facts on File Connect](#))
[Colonial America Module 1: Early Settlement, Expansion and Rivalries](#) ([Adam Matthew Digital Connect](#))
[Community College eBook Collection](#) ([EBSCO Connect](#))
[Digital Sanborn Maps Geo Edition](#) ([ProQuest Connect](#))
[eBook Subscription \(Master Collection\) for Public Libraries](#) ([Facts on File Connect](#))
[eBook Subscription \(Master Collection\) for School Libraries - Award winning!](#) ([Facts on File Connect](#))
[eBook Subscription Collection \(Special collection for Academic/College Libraries\)](#) ([Facts on File Connect](#))
[eLEARNING Library \(17 Mini-databases- cross curricular subject areas\)](#) ([Facts on File Connect](#))
[FILMS ON DEMAND](#) (Streaming Video for Colleges) ([Facts on File Connect](#))
[Flipster Digital Magazines](#) ([EBSCO Connect](#))
[FOLD3 Library Edition](#) ([ProQuest Connect](#))
[FreedomFlix](#) ([Scholastic, Inc. Connect](#))
[Gale Academic Trial Site](#) ([Gale-Cengage Learning Connect](#))
[Gale K-12 Trial Resources](#) ([Gale-Cengage Learning Connect](#))
[Gale Public Libraries Trial Resources](#) ([Gale-Cengage Learning Connect](#))
[Historic Map Works Library Edition](#) ([ProQuest Connect](#))
[Historical Chicago Defender \(1909-1975\)](#) ([ProQuest Connect](#))
[Historical Chicago Tribune 1849 - 1992](#) ([ProQuest Connect](#))
[Historical New York Times 1851 - 2012](#) ([ProQuest Connect](#))
[History Reference Center](#) ([EBSCO Connect](#))
[Image Quest](#) ([Britannica Digital Learning Connect](#))
[Learn360 \(STREAMING VIDEO/MULTI-MEDIA DATABASE\)](#) ([Facts on File Connect](#))
[MyHeritage Library Edition](#) ([EBSCO Connect](#))
[Newspaper Archive](#) ([ProQuest Connect](#))
[Newspapers.com Library Edition](#) ([ProQuest Connect](#))
[ProQuest Obituaries](#) ([ProQuest Connect](#))
[Trench Journals and Unit Magazines of the First World War](#) ([ProQuest Connect](#))

Illinois Resources

- Illinois State Secretary of State:
www.cyberdriveillinois.com/departments/archives
- Illinois State Archives IRAD:
www.cyberdriveillinois.com/departments/archives/IRAD/home.html
- Illinois State Genealogical Society: www.ilgensoc.org
- Illinois Digital Archives: www.idaillinois.org
- Kane County Vital Records: <http://genealogy.kanecountyclerk.org>
- DeKalb County Vital Records: www.dekalbgenealogy.com

Illinois Resources: Chicagoland

- A Look At Cook: www.alookatcook.com
- Chicago Ancestors: www.chicagoancestors.org
- Chicago Genealogical Society: www.chicagogenealogy.org
- Chicago Public Library (Chicago History Collection):
www.chipublib.org/chicago-history
- Cook County Coroner's Inquest Records:
www.cyberdriveillinois.com/departments/archives/databases/cookinqt.html
- Cook County Genealogy: www.cookcountygenealogy.com

Other Useful Web Tools

- Stephen P. Morse: www.stephenmorse.org
- Historical County Lines: <http://jrshelby.com/hcl>
- Birth Date Calculator:
www.progenealogists.com/birthfromdeath.htm
- Hebrew Date Calculator: www.hebcal.com/converter
- Cyndi's List: www.cyndislist.com/database.htm
- Linkpendium: www.linkpendium.com

State & National Websites

- Daughters of the American Revolution: www.dar.org
- Jewish Genealogy: www.jewishgen.org/databases
- Minnesota Historical Society: <http://people.mnhs.org/dci/Search.cfm>
- Missouri State Archives Digital History: www.sos.mo.gov/mdh
- National Genealogical Society: www.ngsgenealogy.org
- US Railroad Retirement Board: www.rrb.gov/default.asp
- Washington State Archives: www.digitalarchives.wa.gov

Case Study: Angus McDonald

- Angus's eldest daughter Marion wanted to know more about her Dad's Military service in WWI: Story was he had been gassed in France.
- We knew his unit because it was listed on his military headstone
- Marion had a photo of him in uniform



Online Resources:

- Ancestry Library Edition
 - 1920 census WWI veteran
 - World War I Draft Card listed as living in Galesburg, Illinois in 1917
 - U.S. Headstone Applications for Military Veterans 1925-1963 had a scan of Clara's application

All U.S., Headstone Applications for Military Veterans, 1925-1963 results for Mc Donald

Provided in association with National Archives and Records Administration

Search Filters: Broad Exact

Mc Donald
born: 1895
death: 1958
- to Will County...

Edit Search | New Search | UPDATE

All Categories
> Birth, Marriage & Death
> Death, Burial, Cemetery & Obituaries

U.S., Headstone Applications for Military Veterans, 1925-1963
These headstone applications can tell you a lot more than just name, rank, and serial number.

View Record	Name	Death Date	Cemetery	Cemetery Location	View Images
View Record	Angus Leroy Mc Donald	19 Sep 1953	Plainfield Cemetery	Plainfield, Illinois	View Images
View Record	August M Mc Donald	14 Sep 1959	Jordan	Allendale, Illinois	View Images
View Record	Glenn D Mc Donald	28 Sep 1950	Riverside Cemetery	Marshalltown, Iowa	View Images
View Record	Ernest J Mc Donald	11 Sep 1949	Toledo Memorial Park Cemetery	Toledo, Ohio	View Images
View Record	Deloye Mc Donald	1 Sep 1955	Provo City Burial Park	Provo, Utah	View Images
View Record	Deloye E Mc Donald	1 Sep 1955	City Cemetery	Provo, Utah	View Images
View Record	Lonzo M Mc Donald	22 Sep 1950	Mifflin Cemetery	Gahanna, Ohio	View Images
View Record	Robert B Mc Donald	13 Sep 1958	Lauderdale Memorial Park		View Images

1920 United States Federal Census for Emma Walker

South Carolina > Greenville > Austin > District 0001

Street	House No	Dwelling	Visited	Name	Relation	Home Ow	Marriage	Sex	Race	Marital St	Year Imm	Naturaliz	Year Natu	Attend	Can Read	Can Write	Birthplace	Tongue	Birthplace of Father	Tongue of Father	Birthplace of Mother	Tongue of Mother	Speaks E	Occupation	Industry	Empl Type	Form	Sub
	20	413	999	Emma Walker	Head	R		F	W	2	1872		1872		no	no	South Carolina		South Carolina		South Carolina		none			5	2	
				Charles Walker	Wife			F	W	2	1872		1872		no	no	South Carolina		South Carolina		South Carolina		none			6	2	
				William Walker	Wife			F	W	2	1872		1872		no	no	South Carolina		South Carolina		South Carolina		none			7	2	
				Thomas M. Walker	Wife			F	W	2	1872		1872		no	no	South Carolina		South Carolina		South Carolina		none			8	2	
				James Walker	Wife			F	W	2	1872		1872		no	no	South Carolina		South Carolina		South Carolina		none			9	2	
				Raymond Walker	Wife			F	W	2	1872		1872		no	no	South Carolina		South Carolina		South Carolina		none			10	2	
				Virginia Walker	Wife			F	W	2	1872		1872		no	no	South Carolina		South Carolina		South Carolina		none			11	2	
				John Walker	Wife			F	W	2	1872		1872		no	no	South Carolina		South Carolina		South Carolina		none			12	2	
				William Walker	Wife			F	W	2	1872		1872		no	no	South Carolina		South Carolina		South Carolina		none			13	2	
				James Walker	Wife			F	W	2	1872		1872		no	no	South Carolina		South Carolina		South Carolina		none			14	2	
				Thomas Walker	Wife			F	W	2	1872		1872		no	no	South Carolina		South Carolina		South Carolina		none			15	2	
				James Walker	Wife			F	W	2	1872		1872		no	no	South Carolina		South Carolina		South Carolina		none			16	2	
				Thomas Walker	Wife			F	W	2	1872		1872		no	no	South Carolina		South Carolina		South Carolina		none			17	2	
				James Walker	Wife			F	W	2	1872		1872		no	no	South Carolina		South Carolina		South Carolina		none			18	2	
				Thomas Walker	Wife			F	W	2	1872		1872		no	no	South Carolina		South Carolina		South Carolina		none			19	2	
				James Walker	Wife			F	W	2	1872		1872		no	no	South Carolina		South Carolina		South Carolina		none			20	2	
				Thomas Walker	Wife			F	W	2	1872		1872		no	no	South Carolina		South Carolina		South Carolina		none			21	2	
				James Walker	Wife			F	W	2	1872		1872		no	no	South Carolina		South Carolina		South Carolina		none			22	2	
				Thomas Walker	Wife			F	W	2	1872		1872		no	no	South Carolina		South Carolina		South Carolina		none			23	2	
				James Walker	Wife			F	W	2	1872		1872		no	no	South Carolina		South Carolina		South Carolina		none			24	2	
				Thomas Walker	Wife			F	W	2	1872		1872		no	no	South Carolina		South Carolina		South Carolina		none			25	2	
				James Walker	Wife			F	W	2	1872		1872		no	no	South Carolina		South Carolina		South Carolina		none			26	2	
				Thomas Walker	Wife			F	W	2	1872		1872		no	no	South Carolina		South Carolina		South Carolina		none			27	2	
				James Walker	Wife			F	W	2	1872		1872		no	no	South Carolina		South Carolina		South Carolina		none			28	2	
				Thomas Walker	Wife			F	W	2	1872		1872		no	no	South Carolina		South Carolina		South Carolina		none			29	2	
				James Walker	Wife			F	W	2	1872		1872		no	no	South Carolina		South Carolina		South Carolina		none			30	2	

Illinois Veterans' Commission

Ben - Ill. - over - RW ORIGINAL

CHECK TYPE REQUIRED (See Instructions attached)

UPRIGHT MARBLE HEADSTONE

FLAT MARBLE MARKER

FLAT GRANITE MARKER

BRONZE MARKER

NAME (Last, First, Middle Initial)

McDONALD, Angus Leroy

ENLISTMENT DATE: April 2, 1918

DISCHARGE DATE: Feb. 21, 1919

SERIAL NO. 813-471

PENSION NO. 809-784

STATE: ILL. RANK: Sgt. COMPANY: Supply Co.

U. S. REGIMENT, STATE ORGANIZATION, AND DIVISION

45th Art.-Coast Artillery Corps

DATE OF BIRTH (Month, Day, Year): Sept. 22, 1895

DATE OF DEATH (Month, Day, Year): Sept. 19, 1953

NAME OF CEMETERY: Plainfield Cemetery

LOCATION (City and State): Plainfield, Ill.

SHIP TO (I CERTIFY THE APPLICANT FOR THIS STONE HAS MADE ARRANGEMENTS WITH ME TO TRANSPORT THE STONE FROM THE FREIGHT STATION TO THE CEMETERY)

NEAREST FREIGHT STATION (City and State): Plainfield, Ill.

POST OFFICE ADDRESS OF CONSIGNEE: Plainfield, Ill.

DO NOT WRITE HERE

FOR VERIFICATION: NOV 9 1958

ORDERED: MAPLE PARK, ILL. 8 DEC 1953

B/L: 3895

SHIPPED

DO NOT WRITE HERE

I hereby agree to assume all responsibility for the removal of the stone promptly upon arrival at destination, and properly place it at the decedent's grave at my expense.

APPLICANT'S SIGNATURE: Colara Mae McDonald

DATE OF APPLICATION: 10/5/58

ADDRESS (Street, City, State): 106 - Fourth Ave., Joliet, Illinois

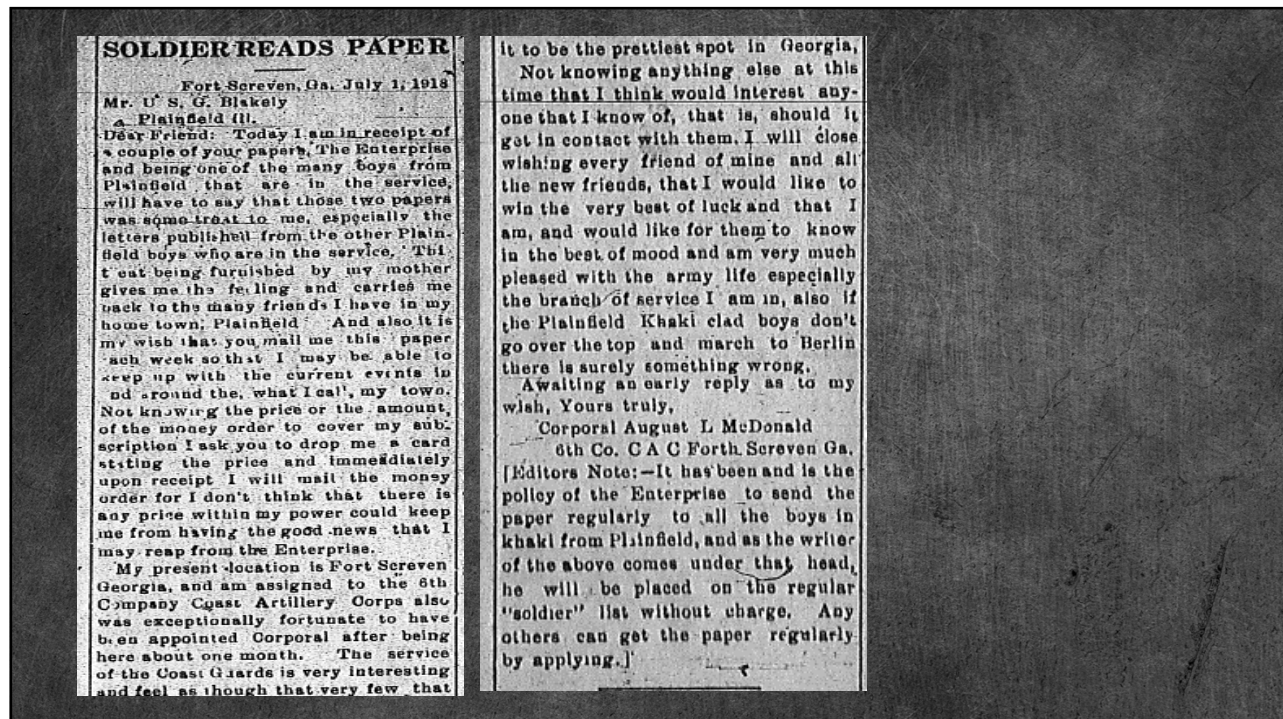
DDMG FORM 623 REV 6 JUL 48

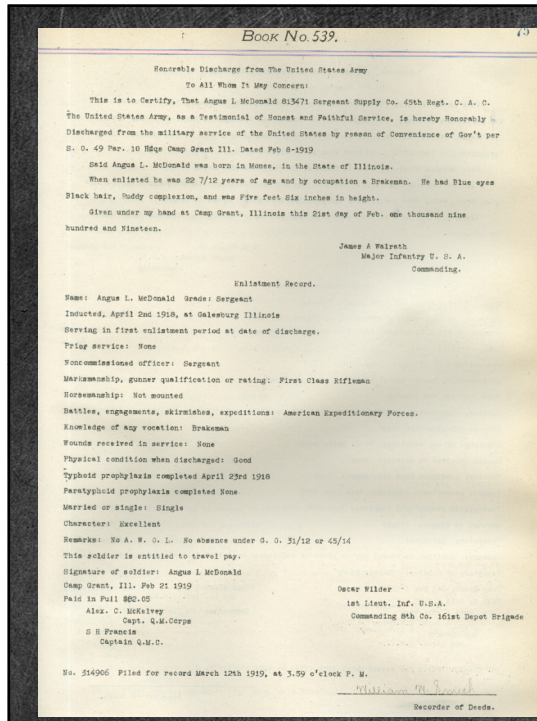
IMPORTANT—Complete Reverse Side

16-11453-7 GPO

Public Libraries:

- With no index to the Plainfield newspapers; I had to search each issue manually on microfilm looking for references to Angus.
- Two blurbs were found:
 - A letter to the editor describing life at Ft. Screven Georgia (1918)
 - An announcement for a “Welcome Home” parade and dinner for returning soldiers in March 1919 (which stated Angus could not attend because he had just been discharged)





Will County Recorder of Deeds recorded all military discharges filed by returning soldiers **BUT** refused to give Marion a copy because all discharges are sealed within the State of Illinois...

8 months later we were finally successful in procuring a copy.

U.S. Archives: NRPC St. Louis

- I drove to St. Louis to view Angus's WWI personnel file. Sadly, the file was a "fire record" and was only 3 pages long; offering very little information about his service.
- It did confirm that Angus was discharged from Camp Grant in Rockford, Illinois

Final Payment Roll for Angus L. McDonald, discharged on February 8, 1919. The document details payments for Army service, general appropriations, and collections, totaling \$318.11. It is signed by Oscar Wilder, 1st Lieut. Inf. U.S.A.

APPROPRIATIONS	
Pay, etc., of the Army, 1917	268.00
Pay, etc., of the Army, 1918	44.10
General appropriations, U. S. Army, 1917	80.67
Pay of U. S. Army, Expense Fund	20.00
Amount	318.11

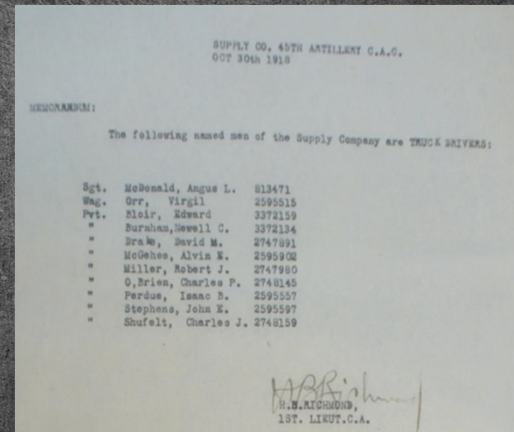
COLLECTIONS	
Postmaster	5.00
Post Exchange	0.00
Post Laundry	0.00
Paid in Cash	51.01
Total	56.01

Total \$ 318.11

Clara Ballot 26.50
W.R. Insurance 12.80
Clara Ballot 127.25

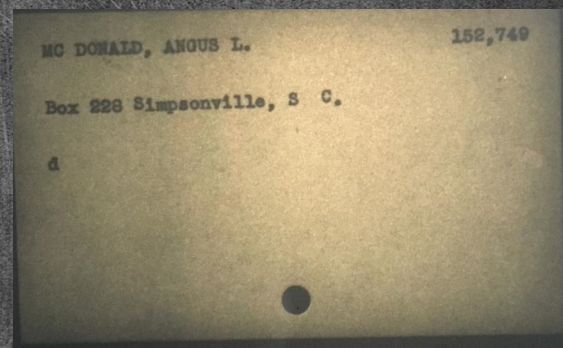
National Archives II: College Park, MD

- I was able to find the unit records for the 45th CAC Supply Brigade
- Angus was listed on 4 documents
 - His promotion to Supply Sergeant
 - His promotion to Sergeant
- Records listed where they were stationed in France; Hospital records for WWI are in Kansas City...



Illinois State Archives

- The State Archives in Springfield has applications for soldiers who applied for bonuses after WWI.
- Angus is listed in an index of soldiers & dependants who filed for bonuses between 1919-1925
- Once again, a file destroyed 80% off the applications. Angus's file did not survive.



Busting Brick Walls

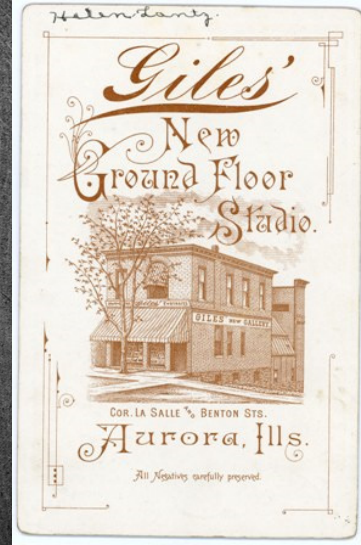
- Patron comes to the desk looking for info to join the DAR:
- She has a bible page that shows the marriage of her ancestor that moves from Virginia to Kentucky @ 1820.
- Problems:
 - Scott County courthouse burned, not once but 3 times
 - Tornado wiped out town in 2008 (church destroyed)
 - No other record shows this marriage and it is needed by DAR

Busting Brick Walls

- Where should she look?
 - Surrounding county courthouses for duplicate records
 - Kentucky State Archives for possible land patents and sales
 - Kentucky State Library for old newspapers on microfilm (ILL)
 - Township Records
 - Highway Commissioners Records
 - Justice of the Peace
 - Internet Archives for early state histories or reminiscences

Busting Brick Walls

- Patron comes to the desk looking for information about a photo of a baby girl in her family collection.
- Photo has a photographer's Mark on it with the studio and city claiming "new" address
- City directories list the studio at that address in 1899



All 1900 United States Federal Census results for Lantz

THE NATIONAL ARCHIVES
 Provided in association with National Archives and Records Administration

Search Filters Broad Exact

lantz
 BORN: 1898
 LIVED IN: Aurora, K...
 Edit Search | New Search | UPDATE

1900 United States Federal Census

This database is an index to individuals enumerated in the 1900 United States Federal Census, the Twelfth Census of the United States. Census takers recorded many details including each person's...

Learn more about this database...
 Browse Individual Records ▶

Shortcut Keys ▶

Results 1-20 of 1,980

View Record	Name	Parent or spouse names	Home in 1900 (City, County, State)	Birth Date	Birthplace	Relation to Head of House	View Image
View Record	Barbara Lantz	Lambert, Maggie	Chicago Ward 6, Cook, Illinois	Dec 1898	Illinois	Daughter	View Image
View Record	Edith M Lantz	Edward M, Louise L	Chicago Ward 12, Cook, Illinois	Jul 1897	Illinois	Daughter	View Image
View Record	Lena Lantz	Peter, Rose	Joliet, Will, Illinois	Feb 1897	Illinois	Daughter	View Image
View Record	Clara B Lantz	Levis M, Clara L	Chicago Ward 28, Cook, Illinois	Sep 1899	Illinois	Daughter	View Image
View Record	Doretha Lantz	Joseph, Hattie	Chicago Ward 10, Cook, Illinois	Aug 1899	Illinois	Daughter	View Image
View Record	Grace M Lantz	Daniel, Rosalia	Wheatland, Will, Illinois	Mar 1899	Illinois	Daughter	View Image
View Record	Hehellan Lantz	Isaac, Mary E	Wheatland, Will, Illinois	Jan 1899	Illinois	Daughter	View Image
View Record	Veroni Lantz	Peter, Rose	Joliet, Will, Illinois	Feb 1899	Illinois	Son	View Image
View Record	Elenore Lantz	August, Gertrude	Chicago Ward 22, Cook, Illinois	Dec 1900	Illinois	Daughter	View Image
View Record	Mary Lantz	Peter, Rose	Joliet, Will, Illinois	Jan 1895	Illinois	Daughter	View Image
View Record	Perry U Lantz	Levis M, Clara L	Chicago Ward 28, Cook, Illinois	Nov 1895	Illinois	Son	View Image
View Record	Elva Lance	David, Luisa P	Lewistown, Fulton, Illinois	Oct 1898	Illinois	Daughter	View Image
View Record	Anna C	John A	Brookbn	Dec			View Image



SCHEDULE No. 1.—POPULATION.

County Will Township Whealland Township Name of Institution _____
 Enumerated by me on the 22 day of June, 1900. William Brown

LOCATION				NAME	RELATION	PERSONAL DESCRIPTION										NATIVITY			CITIZENSHIP		
CITIES	Number of families	Number of males	Number of females			AGE	SEX	Color	Height	Weight	Complexion	Hair	Eyes	Build	Place of birth of this person.	Place of birth of Father of this person.	Place of birth of Mother of this person.	Place of birth of this person.	Place of birth of Father of this person.	Place of birth of Mother of this person.	
	128	128		Amos	Father	W	M	1823	76	nd				Pennsylvania	Pennsylvania	Pennsylvania					
				Eraver John	Head	W	M	1825	72	nd				Germany	Germany	Germany					
	129	129		Eraver Albert	Head	W	M	1872	28	nd	5			Illinois	Germany	Germany					
				Sauls	Wife	W	F	1872	28	nd	5			Illinois	New York	Mass					
				Harry E	Son	W	M	1892	8	nd				Illinois	Illinois	Illinois					
				Roy D	Son	W	M	1898	2	nd	5			Illinois	Illinois	Illinois					
				all Edward W	Daughter	W	F	1900	0	nd	5			Illinois	Illinois	Illinois					
				William Hiram	Son	W	M	1872	28	nd	5			Illinois	New York	Illinois					
	130	130		William Amy	Son	W	M	1872	28	nd	5			Illinois	New York	Massachusetts					
				Schelling A	Wife	W	F	1872	28	nd	5			Germany	Germany	Germany					
	131	131		Demuth Mrs	Head	W	F	1841	59	nd				Germany	Germany	Germany					
				Elizabeth	Daughter	W	F	1878	21	nd	5			Illinois	Germany	Germany					
				Frank	Son	W	M	1891	9	nd	5			Illinois	Germany	Germany					
				John	Son	W	M	1891	9	nd	5			Illinois	Germany	Germany					
	132	132		John	Head	W	M	1871	29	nd	5			Germany	Germany	Germany					
				Harry E	Wife	W	F	1875	24	nd	5			Illinois	Germany	Illinois					
				Hehulion	Daughter	W	F	1899	1	nd	5			Illinois	Illinois	Illinois					
				William	Son	W	M	1894	6	nd	5			Illinois	Illinois	Illinois					
	133	133		Patterson William	Head	W	M	1865	35	nd	10			Illinois	Illinois	Illinois					
				Corra	Wife	W	F	1871	29	nd	10			Illinois	Illinois	Pennsylvania					
				John	Son	W	M	1871	29	nd	10			Illinois	Illinois	Illinois					
				Levy	Son	W	M	1879	4	nd	5			Illinois	Illinois	Illinois					

