

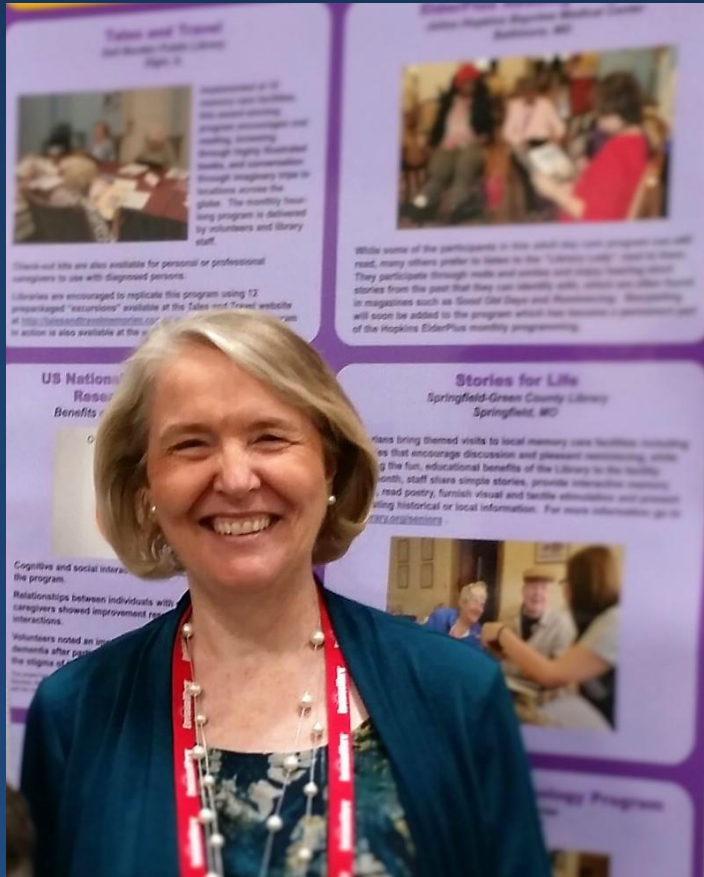
*Serving Patrons
with Dementia Group*



Top 20
of 2016

Tina Williams, White Oak Library District
David Kelsey, St. Charles Public Library

Why We Are Here

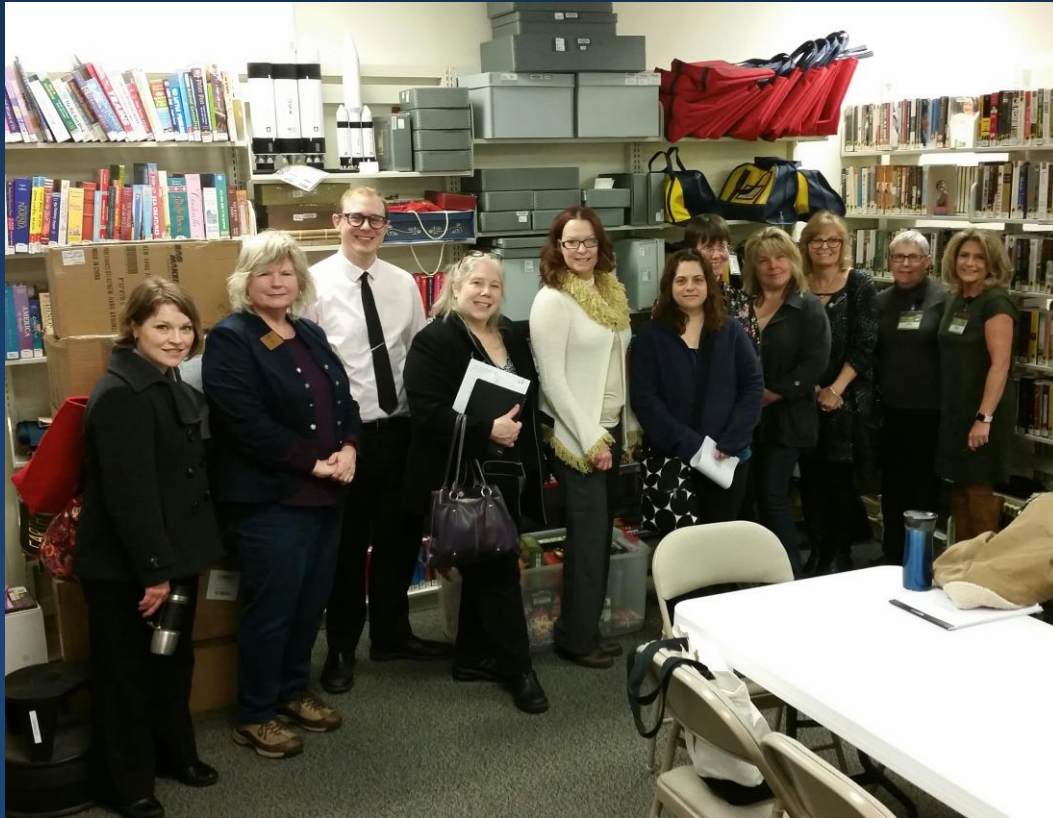


Mary Beth Riedner



ALA/ASCLA
IGARD:
Alzheimer's &
Related Dementias
Interest Group

#1 - What Librarians Do Best: Sharing



Meetings in Illinois began in January 2016.

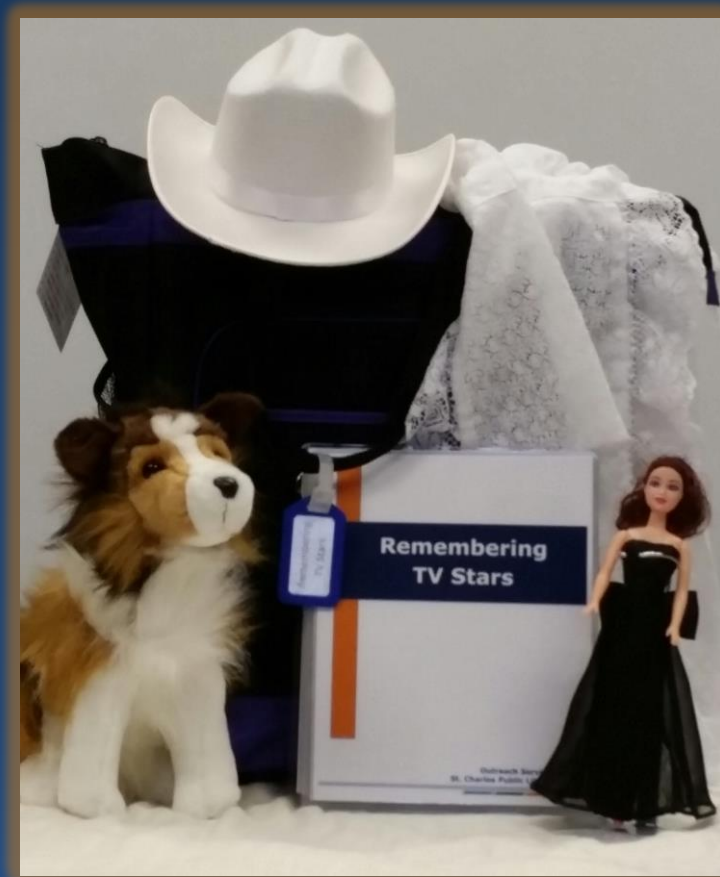


Networking Group:
Serving Patrons with Dementia, RAILS

#2 – Tales & Travel Kits: Where It All Began



#3 – Kits! Bi-Folkal, Reminisce, Educational & Engagement



#4 – Kits for Caregivers

Caregiver Kit

Laughing with Lucy

Caregiver Kits promote memory stimulation, inspire meaningful conversation, and encourage continuing education for individuals who have Alzheimer's disease or dementia. Caregiver Kits are an enjoyable reminiscence activity for a caregiver to share with someone who has dementia.

Contents:

- 1 Book
- 1 CD
- 2 DVDs
- Information Sheet

To check out:
Bring bag to the Circulation Desk

To return:
Return bag to the Circulation Desk

Caregiver Kit

Laughing with Lucy



#5 – Reading Programs



#6 – Readers Advisory & Book Talks



#7 – Library Memories: Tours, Bookmobiles, Bookmarks, and More



#8 – Non-traditional Summer & Winter Reading Programs

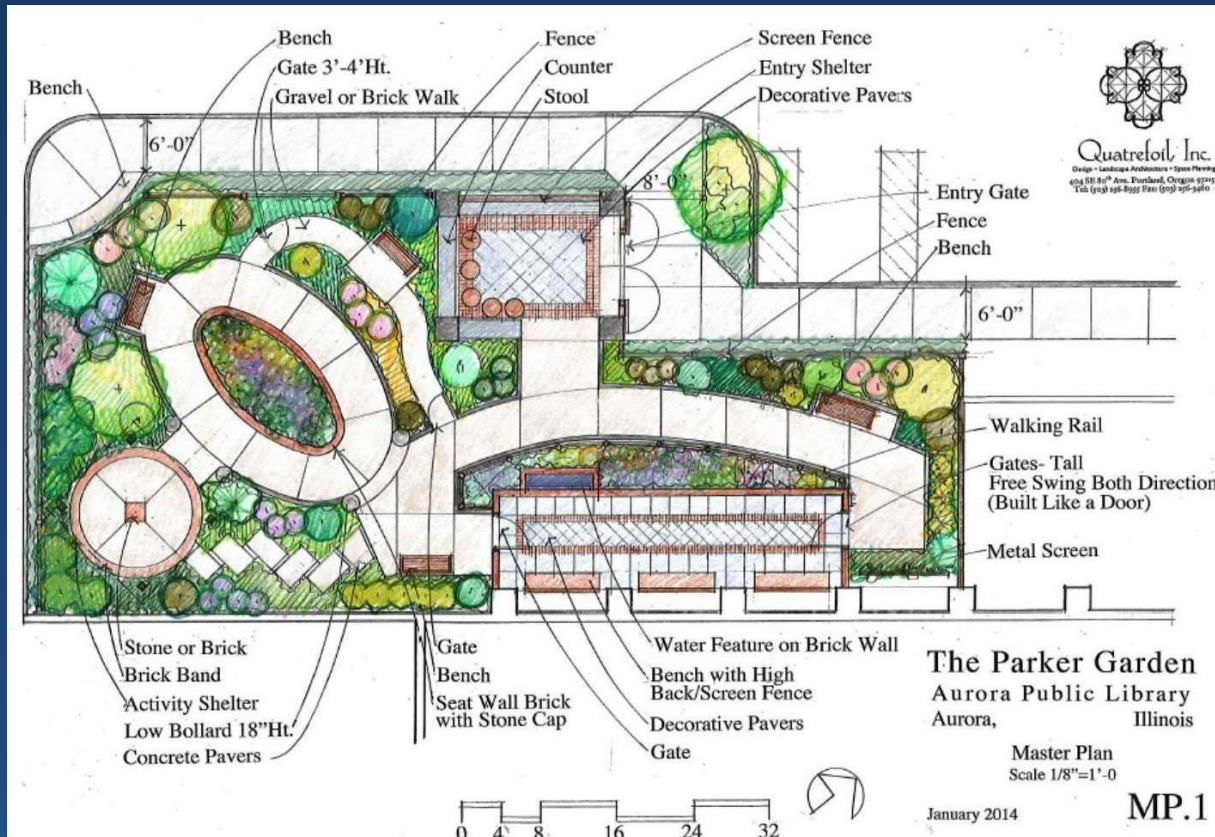
Patrons can spin the wheel for a prize for checking out a book or any engagement with library staff.



#9 – The Importance of Music



#10– Outdoor Gardens & Spaces for those with Dementia



#11 – Pets: Comfort & Stimulate



#12 – Memorable Pets



#13 – Rummage Wagon or The Attic



#14 – TimeSlips



#15 – Try new things: touching different senses and reaching people



#16 – Azl.org: Resources, Programs, Education, Support for Librarians, Dementia Patients, Caregivers

alzheimer's
association

The logo for the Alzheimer's Association, featuring a stylized white brain icon with a circular shape above it, set against a purple background.

#17 – Local Facilities: Memory Care & Assisted Living



#18 - Resources & Information

Alzheimer's Association
Memory Care Facilities

IGARD

IFLA

SPDG



#18 – IFLA Guidelines: Your Patron @ the Library

- Make eye contact so the person knows you are talking to and not about him/her
- Make sure to get the person's attention before speaking
- Speak clearly and slowly
- Be calm and supportive and use comforting gestures
- Pay attention to the body language of the person with dementia as well as your own, since non-verbal communication is very important for persons with language impairments

International Federation of Library Associations:
Guidelines for Library Services to Persons with Dementia

#18 – IFLA Guidelines: Your Patron @ the Library

- Use simple language, short sentences, and avoid foreign words
- Use repetitions and consistent phrasing to avoid confusion
- Be a creative listener and show understanding, tolerance, and respect
- Give the person with dementia enough time to answer and ask questions that can be answered with a simple “yes” or “no” and avoid open-ended questions
- Include everyday topics in your conversation, e.g., the weather, and references to familiar objects that may trigger the memory

#19 - Networking Groups: Model Serving Patrons with Dementia Group

- Develop individual library efforts.
- Invite librarians to share: in person, listserv, social media, conferences, etc.
- Create a group: choose moderators.
- Share stories, ideas, activities.
- Collaborate where you can.
- Support one another's efforts.



#20 – Keep the Conversation Going

Keep the conversation going on the different listservs and through our new blog.

Contact

Tina Williams and David Kelsey

Email:

librarianspdg@gmail.com



<https://librariansdementia.wordpress.com>